



JADEWIN

■ POLYMER ADDITIVES

## JADEWIN HER

### CHAIN EXTENDER

**QINGDAO JADE NEW MATERIAL  
TECHNOLOGY CO.,LTD**

青岛杰得佳新材料科技有限公司

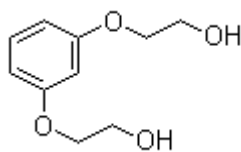
#### CHEMICAL COMPONENT

COMPONENT 1,3-Bis(2-hydroxyethoxy)benzene

CAS 102-40-9

Molecular C<sub>10</sub>H<sub>14</sub>O<sub>4</sub>

M.W 198.2



#### SPECIFICATION AND PHYSICAL PROPERTIES

TEST	UNIT	SPECIFICATION
APPEARANCE		WHITE POWDER
HYDROXYL VALUE	MgKOH/g	535-580
WATER	%	≤0.20
MELTING POINT	°C	≥83.0
ASSAY	%	≥98.0

#### FEATURE AND APPLICATION

\*JADEWIN HER is an aromatic diol chain extender. It can improve tensile, hardness, resilience properties to MDI-polyurethane elastomers.

\*JADEWIN HER has been approved that it can maintain maximum endurance, elasticity and plasticity of PU elastomer. It also offers minimum shrinkage. Besides of those common advantages of aromatic family chain extenders.

\*JADEWIN HER avoids the deficiencies in HQEE (HQEE returns solids quickly when temperature drops a little). And JADEWIN HER offers better tear strength, initial strength, compression set. It has advantages of low shrinkage, cut resistance, low melting point and easy handling etc.

\*Typical uses of HER include seal, mud pipeline lining, skating wheel, shoe part, beverage container, spandex and soft or rigid packaging materials etc



JADEWIN

**QINGDAO JADE NEW MATERIAL  
TECHNOLOGY CO.,LTD**

**青岛杰得佳新材料科技有限公司**

Solubility at 25°C,wt.%

Acetone:11

Ethanol:13

Ethyl Acetate:3

Ethane:<1

Dimethylacetamide (DMAC): >1

#### **PACKING**

25KG DRUM

#### **STORAGE**

JADEWIN HER aromatic diol is hygroscopic and consideration should be taken to store the product in a tightly closed container in a cool dry place.

JADEWIN HQEE aromatic diol is also sensitive to light (UV) and will turn yellow-brown in the presence of light.



JADEWIN

**QINGDAO JADE NEW MATERIAL  
TECHNOLOGY CO.,LTD**  
青岛杰得佳新材料科技有限公司