

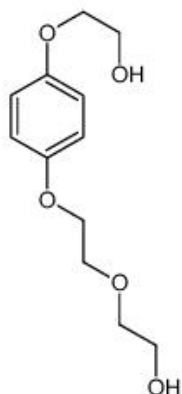
■ POLYMER ADDITIVES

JADEWIN HQEE-L

CHAIN EXTENDER

CHEMICAL COMPONENT

COMPONENT	4—Hydroxyethoxy—1—hydroxyethylbenzendiether
CAS	849677-06-1
Molecular	C ₁₂ H ₁₈ O ₅
M.W	242.26



SPECIFICATION AND PHYSICAL PROPERTIES

TEST	UNIT	SPECIFICATION
APPEARANCE		WHITE TO YELLOWISH TRANSPARENCY LIQUID
HYDROXYL VALUE	mgKOH.g ⁻¹	470-490
WATER CONTENT	%	≤0.20
PH		6.4-6.6

FEATURE AND APPLICATION

* JADEWIN HQEE-L is not easy to flow at room temperature. When temperature is up to 27°C, its' viscosity gradually diminish and it can flow.

*Comparedwith solid HQEE, JADEWIN HQEE-L is more convenient to use because it is liquid.

Andelastomers cured with JADEWIN HQEE-L exhibit similar performance to those cured withsolid HQEE,



JADEWIN

**QINGDAO JADE NEW MATERIAL
TECHNOLOGY CO.,LTD**

青岛杰得佳新材料科技有限公司

but with the added advantages of excellent tensile strength, elongation and soft flexibility, etc.

*JADEWIN HQEE-L can be dissolved in dimethyl acetamide(DMAC).

*As a chain extender, JADEWIN HQEE-L is mainly used to cure TDI / MDI systems PU products like PU adhesives, coatings, sealants, elastomers, PU foam, spandex and sports ground, etc.

*JADEWIN HQEE-L is especially suitable for high hardness products.

PACKING

Net 20 kg galvanized iron drum

STORAGE

Keep container tightly closed and dry and storage in cool place

CHEMICAL INVENTORIES

Australia - AICS

Canada - DSL

EU - EINECS

China - IECSC

Japan - ENCS

New Zealand - NZIoC

Korea - ECL

USA - TSCA

Philippines - PICCS