

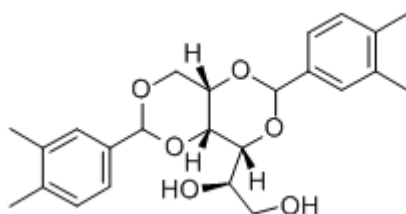
■ POLYMER ADDITIVES

JADEWIN 3988

NUCLEATING AGENT

CHEMICAL COMPONENT

COMPONENT	1,3:2,4-Bis(3,4-dimethylbenzylideno) sorbitol
CAS	135861-56-2
Molecular	C ₂₄ H ₃₀ O ₆
M.W	414.5



SPECIFICATION AND PHYSICAL PROPERTIES

TEST	UNIT	SPECIFICATION
APPEARANCE		WHITE POWDER
VOLATILES	%	0.50MAX
MELTING POINT	°C	250.0-265.0
PARTICLE SIZE	μ m	30MIN
D97		
PARTICLE SIZE	μ m	15MAX
D50		

FEATURE AND APPLICATION

* JADEWIN 3988 is new sorbitol based clarifying agent for polyolefins. Designed to address the limitations of previous generation clarifying agents with respect to transparency, organoleptics, processability and nucleation capability.

*JADEWIN 3988 offers superior aesthetics properties and easy processing characteristics.

*JADEWIN 3988 Suitable for food contact or odor sensitive applications

Application:

-Injection molding - thermoplastics



-Extrusion

Advantages:

-JADEWIN 3988 can get highest clarity, glossiness and surface smoothness.so it is particularly suitable for transparent products.

-PP with clarifying agent/nucleating agent JADEWIN 3988 gives higher productivity.

-PP clarified with clarifying agent/nucleating agent JADEWIN 3988 offers an excellent combination of properties-toughness, flexibility, rigidity, moisture barrier, chemical resistance, heat resistance, and suitability for food contact. higher stiffness and heat distortion temperature.

-clarifying agent/nucleating agent JADEWIN 3988 in PP doesn't affect the taste of contained foods or liquid,so it is a better choice for food application compared to other conventional clarifying agent or nucleating agents.

PACKING

10 KG CARTON, 20KG CARTON

STORAGE

Keep container tightly closed and dry and storage in cool place

CHEMICAL INVENTORIES

Australia - AICS

Canada - DSL

EU - EINECS

China - IECSC

Japan - ENCS

New Zealand - NZIoC

Korea - ECL

USA - TSCA

Philippines - PICCS