



JADEWIN

■ POLYMER ADDITIVES

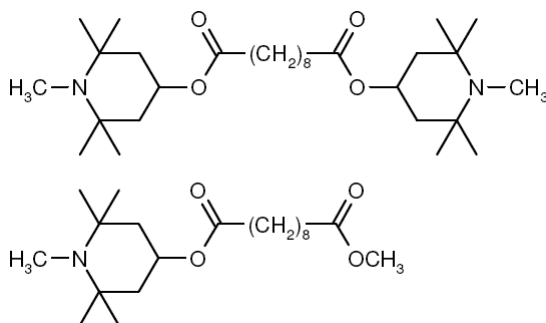
**QINGDAO JADE NEW MATERIAL
TECHNOLOGY CO.,LTD**

青岛杰得佳新材料科技有限公司

JADEWIN LS 292

CHEMICAL COMPONENT

| | |
|-----------|--|
| COMPONENT | Bis(1,2,2,6,6-pentamethyl-4-piperidyl) sebacate Methyl 1,2,2,6,6-pentamethyl-4-piperidyl sebacate |
| CAS | 41556-26-7 82919-37-7 |
| Molecular | C30H56N2O4 C21H39NO4 |
| M.W | 509 370 |



SPECIFICATION AND PHYSICAL PROPERTIES

| TEST | UNIT | SPECIFICATION |
|-----------------|-------|---------------------|
| APPEARANCE | | LIGHT YELLOW LIQUID |
| ASSAY | % | 96.00MIN |
| METHYL SIBILATE | % | 15.00-25.00 |
| BIS SIBILATE | % | 75.00-85.00 |
| VOLATILES | % | 0.50MAX |
| ASH | % | 0.10MAX |
| COLOR | Hazen | 50MIN |
| CLARITY | | CLEAR |
| TRANSMITTANCE | | |
| 425nm | % | 98.00MIN |
| 500nm | % | 99.00MIN |



JADEWIN

**QINGDAO JADE NEW MATERIAL
TECHNOLOGY CO.,LTD**

青岛杰得佳新材料科技有限公司

FEATURE AND APPLICATION

* JADEWIN LS292 is a low molecular hindered amine light stabilizer (HALS), which is effective in a broad range of plastics and coatings. Plastic applications include polyurethanes, flexible PVC, styrenic polymers (ABS, ASA), acrylics, unsaturated polyesters, elastomers, adhesives, and sealants. The product is also ideal for use in plastisols and liquid masterbatches for plastics.

-Coatings applications include refinish coatings, industrial coatings, coil coatings, wood coatings, trade sale paints, and radiation curable acrylics. The product is suitable for use in both water- and solvent-based coating systems.

-Polyurethane application, JADEWIN LS292 can be used together with JADEWIN UV 1 or JADEWIN UV 571 to have synergistic effect

* JADEWIN LS292 is soluble in most common organic solvent and compatible with many polymers

* For additional information please consult the Material safety Data Sheet

PACKING

25KG Drum, 600KG /Pallet

STORAGE

Keep container tightly closed and dry and storage in cool place

CHEMICAL INVENTORIES

Australia - AICS

Canada - DSL

EU - EINECS

China - IECSC

Japan - ENCS

New Zealand - NZIoC

Korea - ECL

USA - TSCA

Philippines - PICCS