

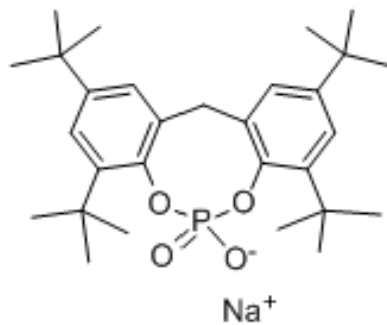
■ POLYMER ADDITIVES

JADEWIN N11

NUCLEATING AGENT

CHEMICAL COMPONENT

COMPONENT	Sodium 2,2'-methylene-bis-(4,6-di-tert-butylphenyl)phosphate
CAS	85209-91-2
Molecular	C ₂₉ H ₄₂ NaO ₄ P
M.W	508



SPECIFICATION AND PHYSICAL PROPERTIES

TEST	UNIT	SPECIFICATION
APPEARANCE		WHITE POWDER
VOLATILES	%	0.50MAX
MELTING POINT	°C	400MIN

FEATURE AND APPLICATION

- * Effectively improve stiffness, heat distortion temperature , crystallization temperature/Rate and Clarity of PP
- * High Thermal resistance and Extraction resistance
- *Odorless
- *FDA Approval

Application:

- PP
- HDPE



PACKING

10 KG CARTON, 20KG CARTON

STORAGE

Keep container tightly closed and dry and storage in cool place

CHEMICAL INVENTORIES

Australia - AICS
Canada - DSL
EU - EINECS
China - IECSC
Japan - ENCS
New Zealand - NZIoC
Korea - ECL
USA - TSCA
Philippines - PICCS